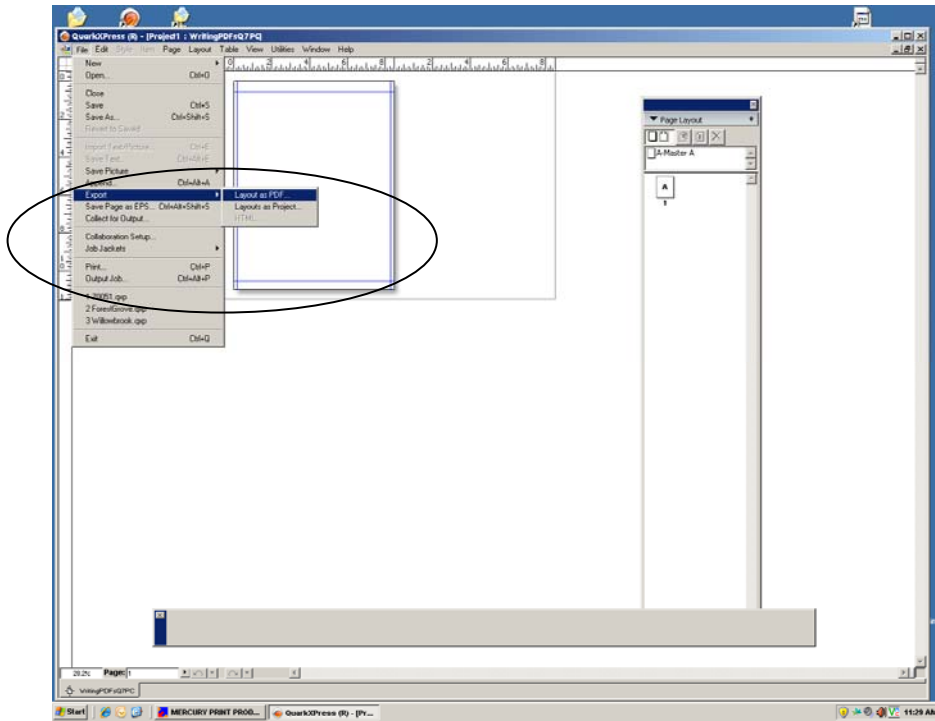


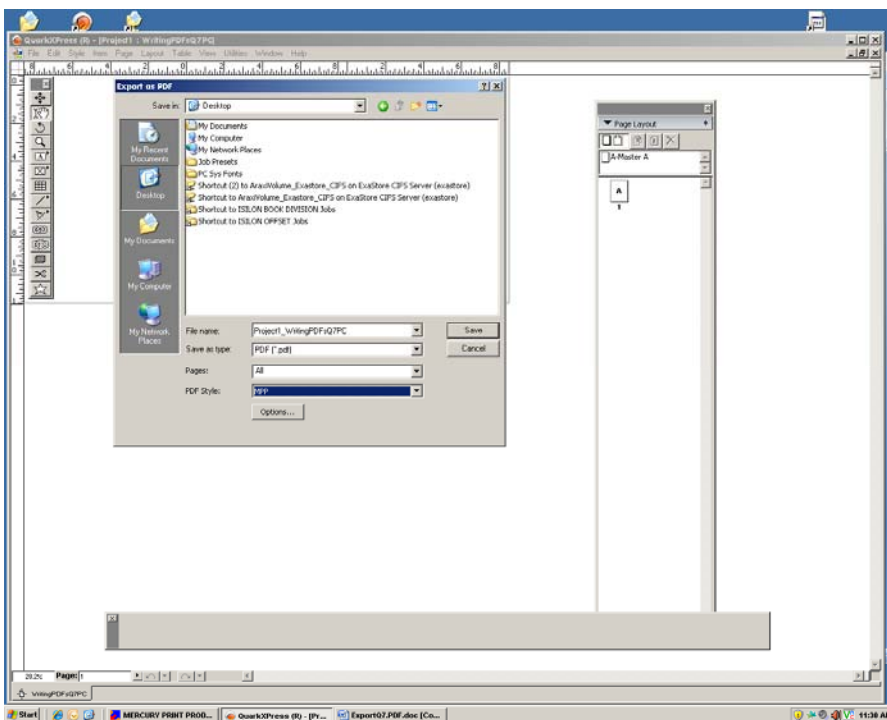


HOW TO EXPORT A PDF FROM QUARK

1. File -> Export -> Layout as PDF.

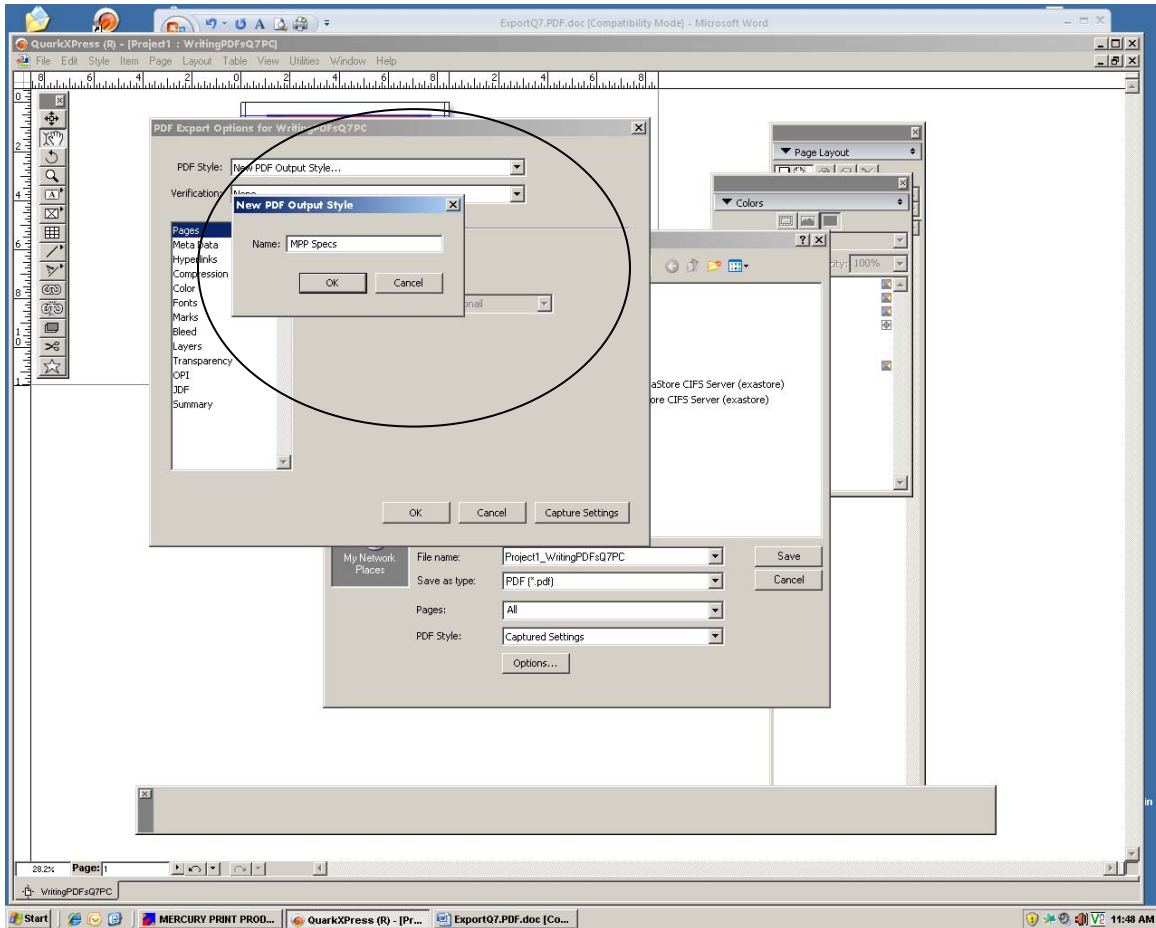


2. Name your file with the .pdf extension, point it to save to your Desktop.

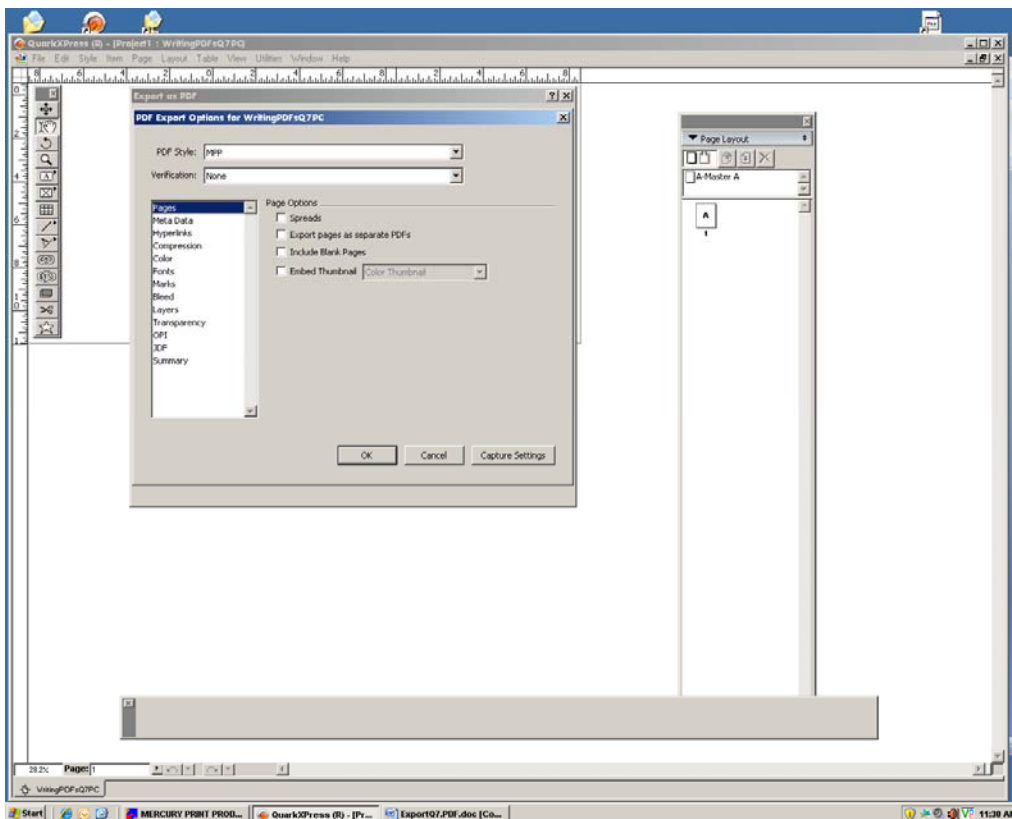


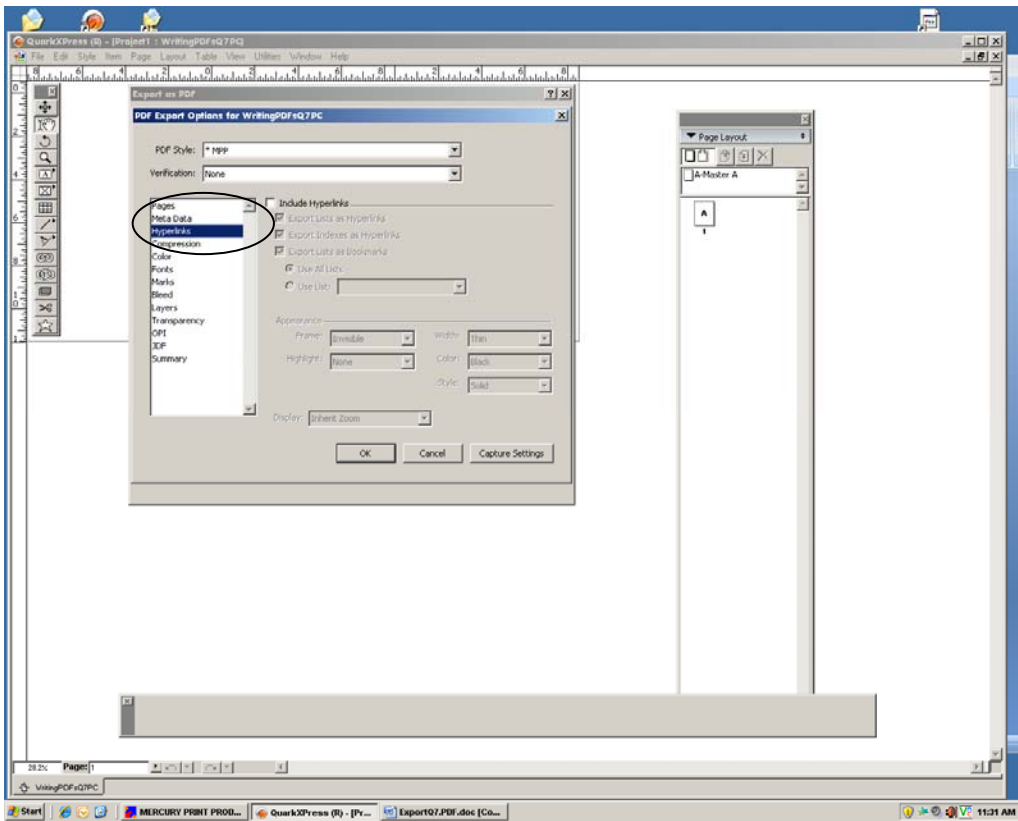
3. Click on "Options" at bottom of PDF window.

4. The Options menu pops up. You can select on “Output Style -> Create New PDF Output Style” to save Mercury Print’s settings for future PDF creation.

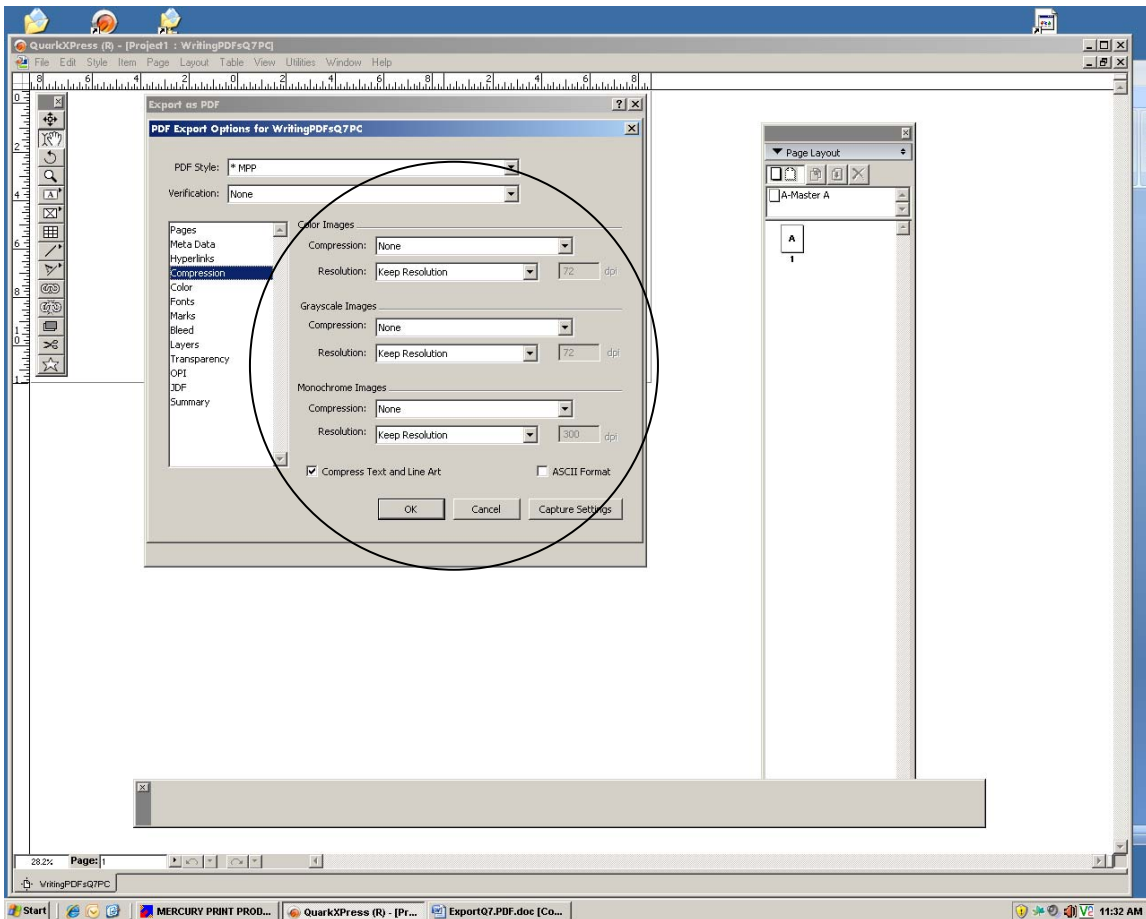


5. Follow each screen grab below for Mercury Print’s PDF specifications.

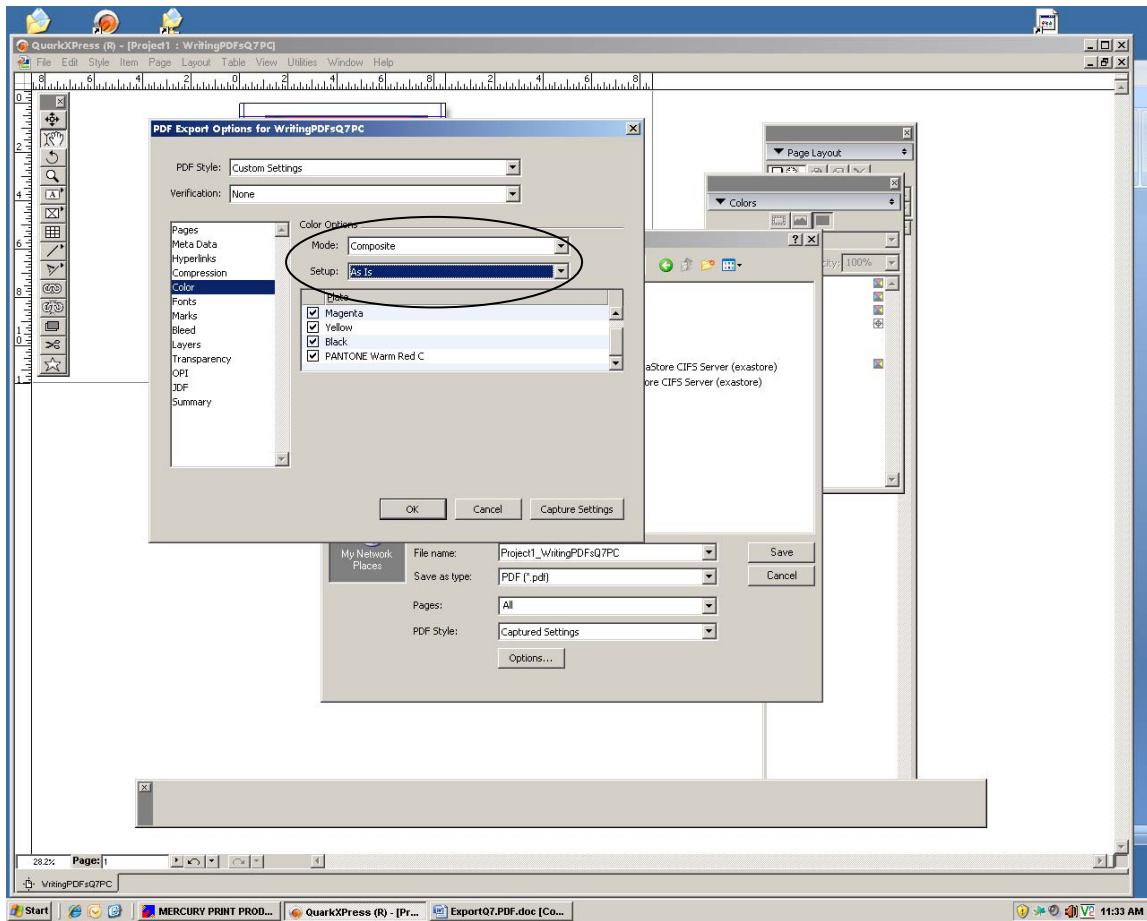




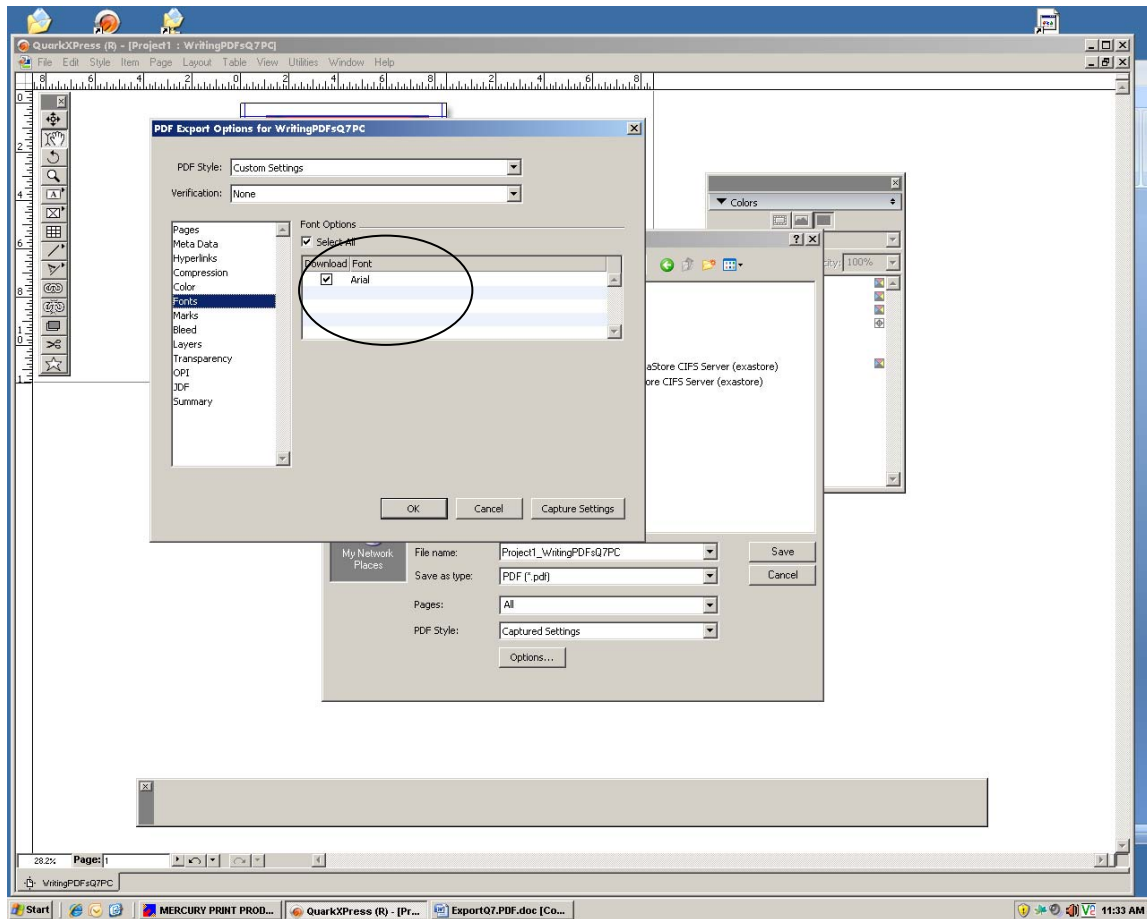
6. Don't compress any images. Keep image resolution.



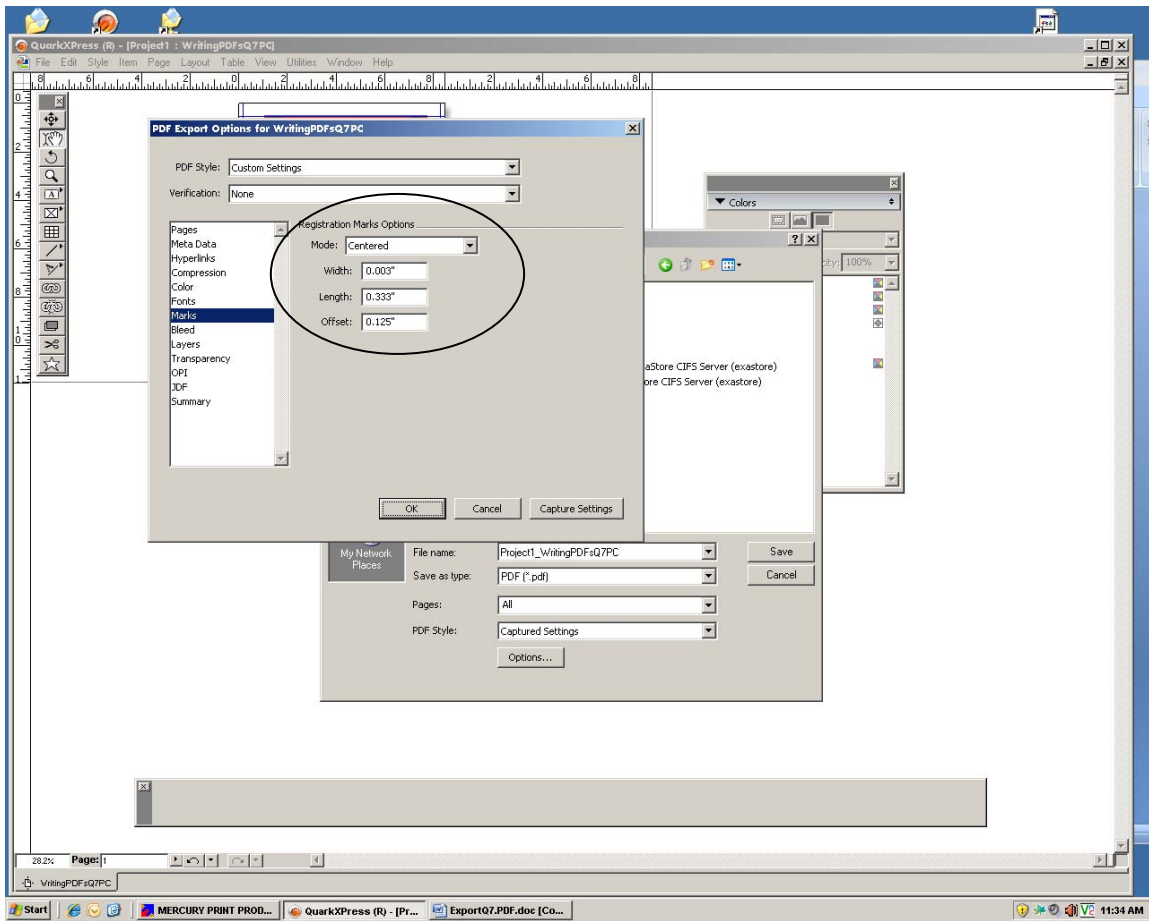
7. Color : Composite, Select Colors to Print “As Is.”



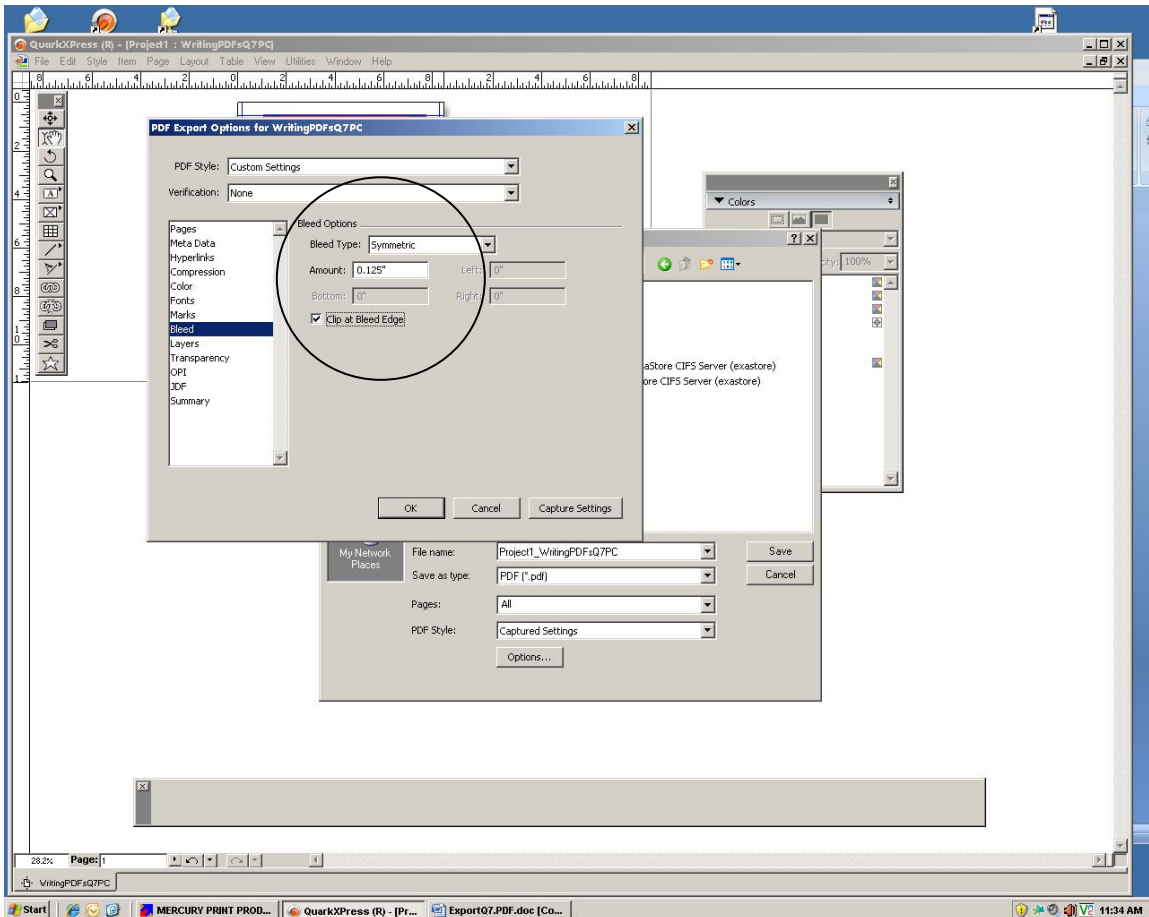
8. Be sure to embed all fonts.



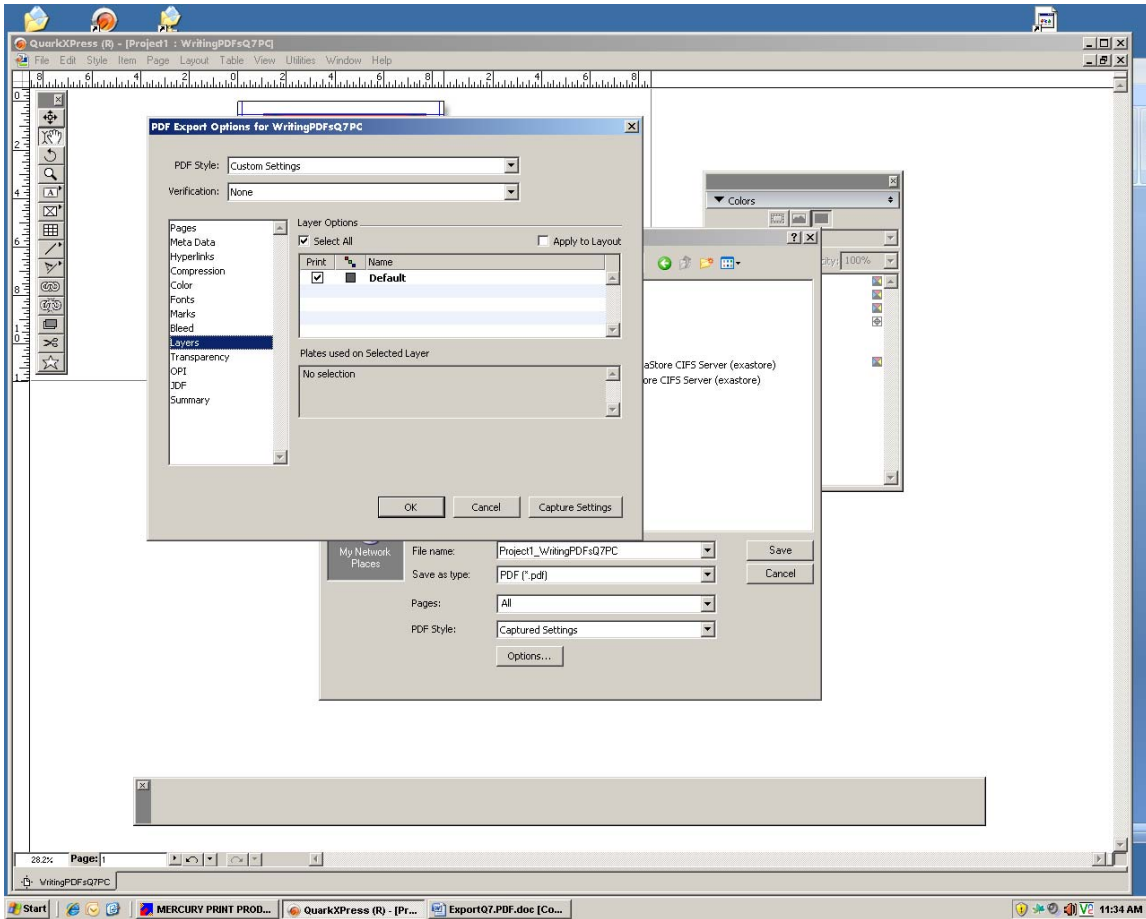
9. Include Marks. Offset your marks .125" (1/8 inch) so they don't go into bleed or trim area.



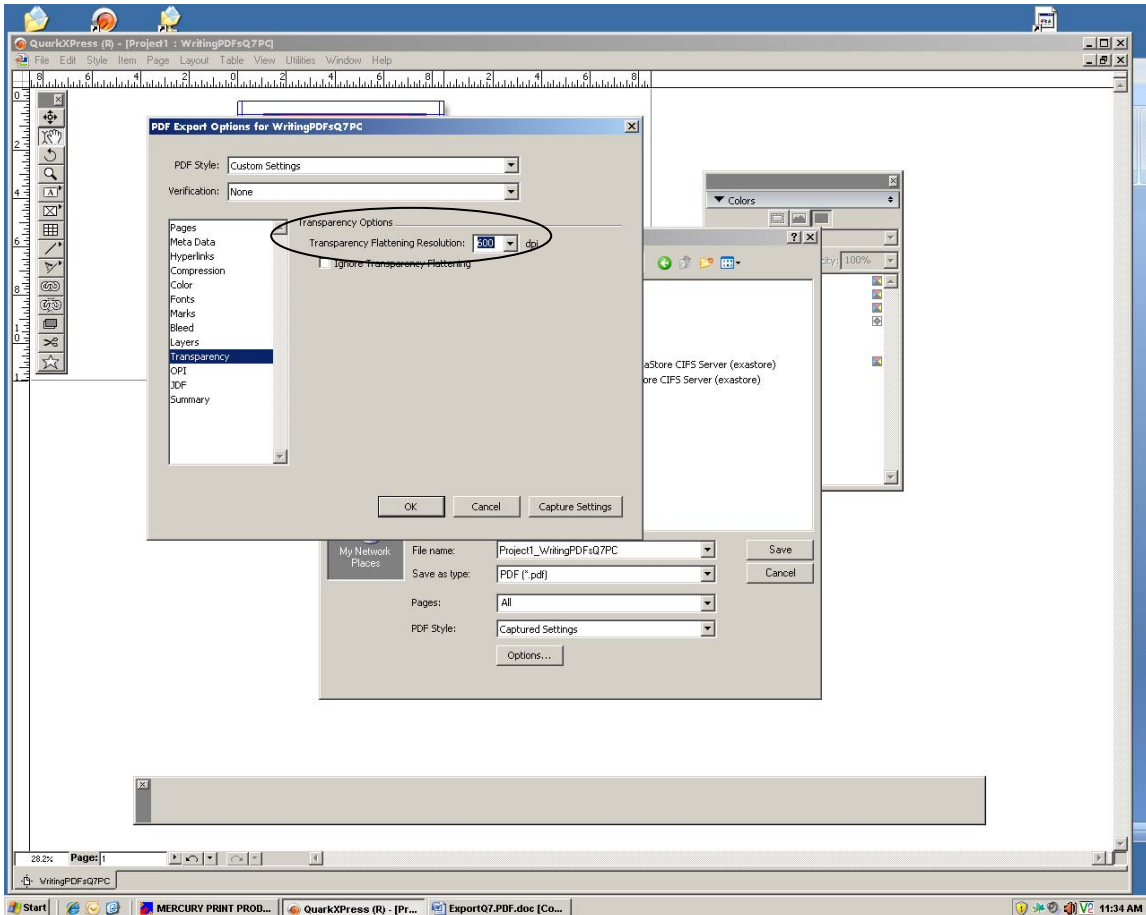
10. Include Bleed. Our spec is .125 " on all sides.



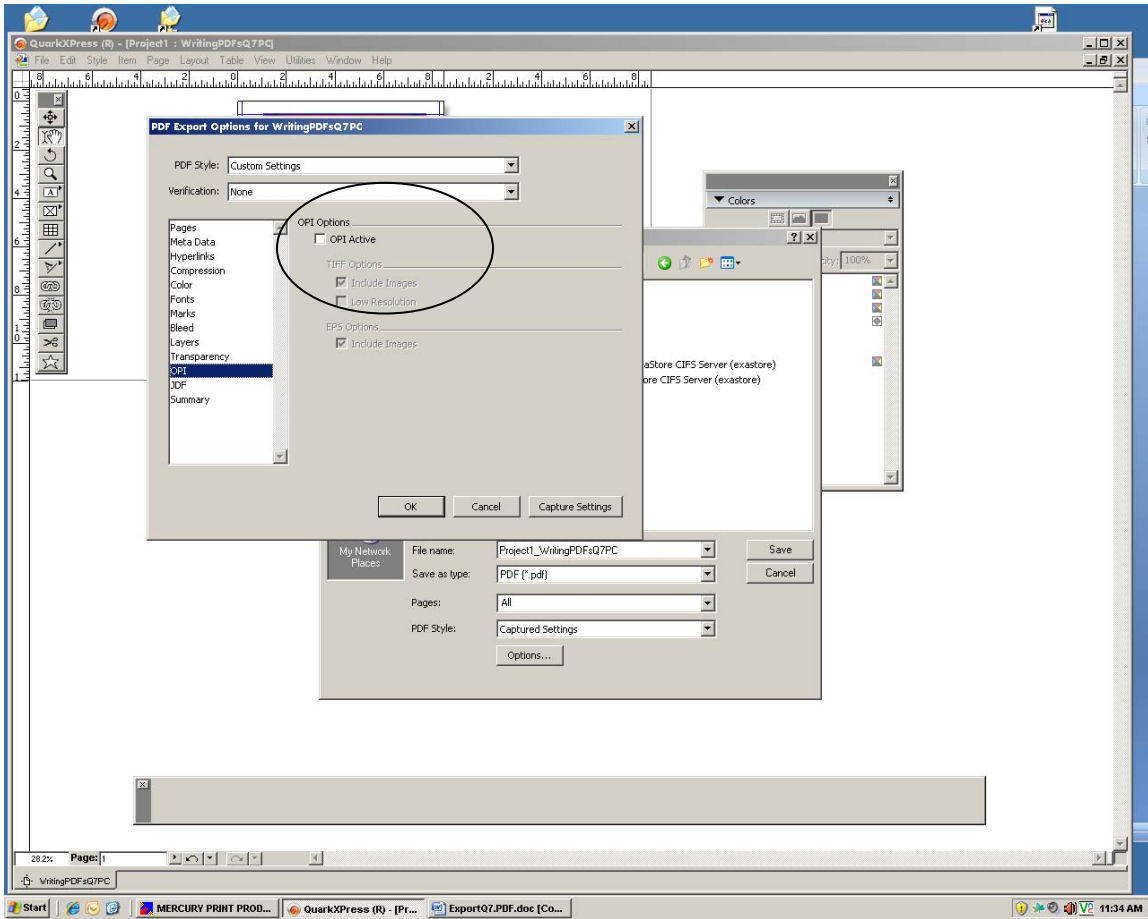
11. For best results don't layer your Quark document.



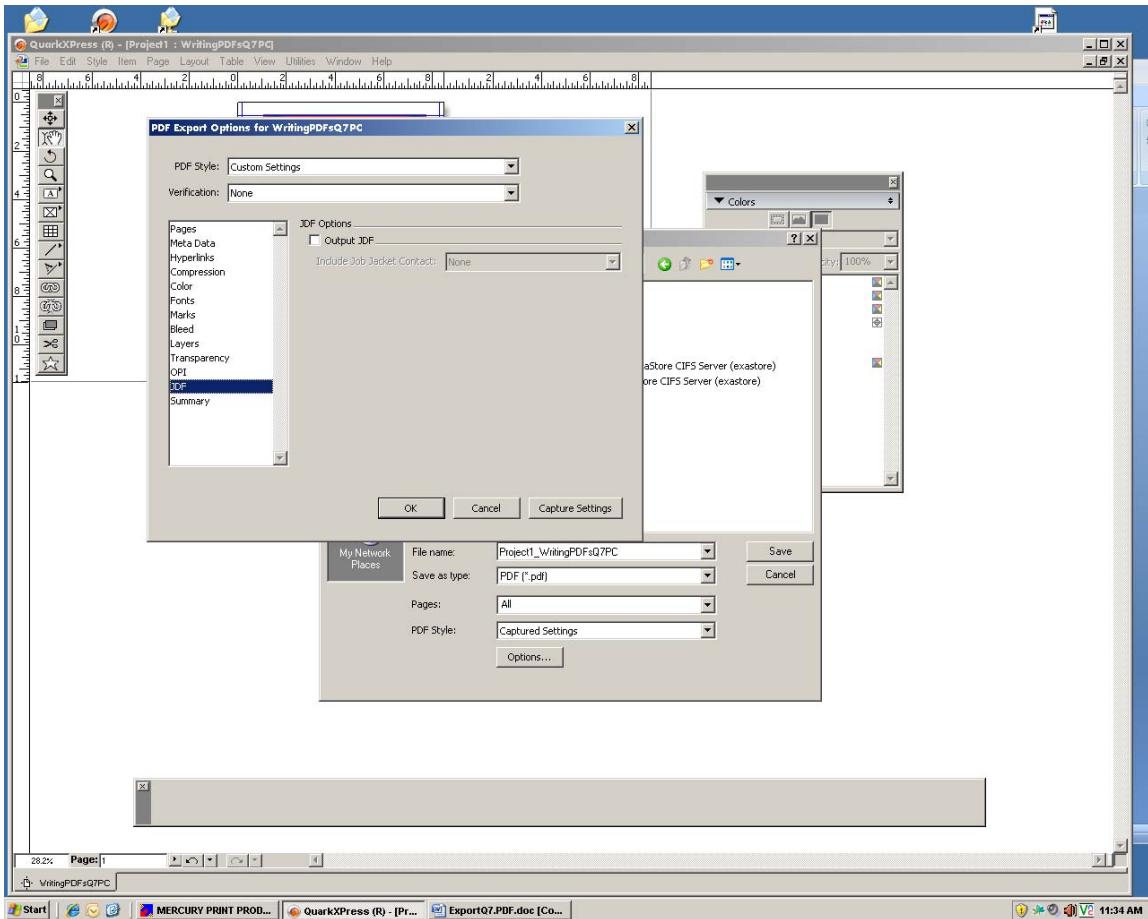
12. Transparency options : 600 dpi. Don't click on ignore.



13. Click OFF OPI.



14. Don't include any JDF info at this time.



15. Click OK and Your file will be saved to the location you browsed to.

KNOWN ISSUES

1. **Stylized fonts** : if you make a font stylized by using the Quark Font palette we cannot guarantee the result of the typeface. We have seen characters, words or entire paragraphs not render correctly. If you use a font (for example) "Verdana", don't select the "B" attribute in the type palette as that is not truly Verdana Bold. Instead, select the Bold Verdana typeface in the drop down menu of your font choices.

To check your document, go under Usage -> Fonts and if you have a font name with brackets <> to the right of the name it has been stylized. (ie., Verdana <Bold> is a font that is used in the document and Stylized.) You should instead see in your Font Usage the name Bold Verdana, with no brackets.

2. **Quark effects** : you can now apply drop shadows to windows. We have seen type render incorrectly that is touching or sitting behind the drop shadow area. The workaround is to have your type layer the TOPMOST layer in your design.